



WE DELIVER
QUALITY & TRUST.

sakarmetal@yahoo.com

Certificate

ISO 9001 : 2015

GLOBAL MANAGEMENT SYSTEM CERTIFICATE

This is to certify that Quality Management System of

SAKAR METAL & TOOLS PVT. LTD.
B-232/233, 2nd Floor, Advance Business Park, Shahibaug,
Ahmedabad-380004, Gujarat, India.

Has been assessed and found to conform to the requirements of

ISO 9001 : 2015

For Following Scope:

Supplier & Stockiest of Stainless Steel, Carbon Steel, Alloy Steel & Nickel Alloy Pipes, Fittings, Sheet-Plates, Welding & Safety Items, Valves, Hardware and Structural Steel etc.

Certificate No.: 1011-QMS-BA-01-2202-SIAC-001373-IN

This certificate is valid from 27-Jan-2022 until 27-Jan-2025 and remain valid subject to satisfactory surveillance audits on 26-Jan-2023 and 26-Jan-2024. Re-certification audit due on 27-Jan-2025. Certification expiry on 26-Jan-2025.

[Signature]
Certification Manager
Gulf Lloyds Business Assurance

GIBA is a div. of Gulf Lloyds (UK) Limited, as CAB for System certification. GIBA is accredited by SIACET (Swiss International Accreditation Center - EUROPE). For verification of this certificate, visit WWW.GL-BA.COM. The certificate remains the property of Gulf Lloyds Business Assurance, to whom it must be returned on request. Lack of fulfillment of surveillance terms and conditions of all issues may render this certificate invalid. Gulf Lloyds or its any division does not accept any liabilities or claims raised due to this certificate.



ISO 45001 : 2018

GLOBAL MANAGEMENT SYSTEM CERTIFICATE

This is to certify that Occupational Health and Safety Management System of

SAKAR METAL & TOOLS PVT. LTD.
B-232/233, 2nd Floor, Advance Business Park, Shahibaug,
Ahmedabad-380004, Gujarat, India.

Has been assessed and found conform to the requirements of

ISO 45001 : 2018

For Following Scope:

Manufacturer, Supplier & Exporter of Stainless Steel, Carbon Steel, Alloy Steel & Nickel Alloy Pipes, Tubes, Pipe Fittings and Flanges.

Certificate No.: 1011-OHSMS-BA-02-3202-SIAC-001712-IN

This certificate is valid from 06-Feb-2023 until 06-Feb-2026 and remain valid subject to satisfactory surveillance audits on 05-Feb-2024 and 05-Feb-2025. Re-certification audit due on 06-Feb-2026. Certification expiry on 05-Feb-2026.

[Signature]
Certification Manager
Gulf Lloyds Business Assurance

GIBA is a div. of Gulf Lloyds (UK) Limited, as CAB for System certification. GIBA is accredited by SIACET (Swiss International Accreditation Center - EUROPE). For verification of this certificate, visit WWW.GL-BA.COM. The certificate remains the property of Gulf Lloyds Business Assurance, to whom it must be returned on request. Lack of fulfillment of certification terms and conditions of all issues may render this certificate invalid. Gulf Lloyds or its any division does not accept any liabilities or claims raised due to this certificate.



Certificate No: GLIS/AHD/SMTPL/2023/02/MCC-2371
GL Ref. No 101-091-3202-02-0244

APPROVAL OF MATERIAL MANUFACTURER

This is to certify that:

SAKAR METAL & TOOLS PVT. LTD.
B-232/233, 2nd Floor, Advance Business Park, Shahibaug, Ahmedabad-380004, Gujarat, India.

has been approved as a manufacturer in accordance with the requirements of International Code / Standards & G. Guidelines of Following items:

Sr. No.	Product Name	Type	Manufacturing Range	Material Specification
01	Pipes	SMLS / WELDED	1/8" TO 48"	Stainless Steel (A312, A358 / A358M Gr. TP 304, 304L, 316, 316L, 321, 347, 321H, 304H, 347, 347H, 316, 18H, 316Ti, 317, 317L, 8904, 8904L)
			1/2" TO 60"	Carbon Steel (A 671 / A 671M CLASS 10, 11, 12, 13, 20, 21, 22, 23, 30, 31, 32, 33, 40, 41, 42, 43, 50, 51, 52, 53, 60, 61, 62, 63, 70, 71, 72, 73, A672 / A672M Gr A45, A50, A55, B60, B65, B70, C55, C60, C65, C70, D70, D80 AND CR CLASS 10, 11, 12, 13, 20, 21, 22, 23, 30, 31, 32, 33, 40, 41, 42, 43)
			1/2" TO 48"	Duplex Steel (A 780 / A 780 M S31803, S 32205)
			1/2" TO 48"	Alloy Steel (Gr. P1 / P2 / P3 / P4 / P11 / P12 / P22 / PPT)
			1/2" TO 48"	Inconel (UNS NO 8000, NO 8801, UNS 8825, UNS NO8800, UNS NO8810, UNS NO8811, UNS NO8825)
			1/2" TO 48"	Nickel (UNS NO 2200, UNS NO 2201)
02	Tubes	SMLS / WELDED	1/8" TO 8" NB	Stainless Steel (Gr. TP304, 304L, 304H, 316, 316L, 316H, 316Ti, 317, 317L, 321, 321H, 347, 347H, 8904 - 8904L)
			1/8" TO 8" NB	DUPLEX (Gr. S31803, S32205, Super Duplex, S32700, S32760)
			1/4" TO 6"	CU-NI (B466 / B466M C70400, C70800, C70820, C71000, C71500, C71520, and C72200)
			1/4" TO 8"	Inconel (UNS NO8000, NO8801, UNS NO8825, UNS NO8800, UNS NO8810, UNS NO8811, UNS NO8825)
			1/4" TO 8"	SS Gr. 904L (UNS 9040)
			1/8" TO 8"	Alloy 20 Tube (Gr.20 / B729M UNS NO8020, UNS NO8026, UNS NO8024)
			1/8" TO 8"	Titanium Alloy (B861 / B861M Gr. 1, 2, 3, 4, 5, 6, 11, 23)
			1/4" TO 6"	Copper Tube (B111 / B111M C23000, C28000, C44300, B, C & D, C44400, C44500, C68000, C81300, C81400, D, C68700, B, C73400, C73600-65-10)
			1/8" TO 8"	Alloy 20 Tube (Gr.20 / B729M UNS NO8020, UNS NO8026, UNS NO8024)
			1/4" TO 6"	Copper Tube (B111 / B111M C23000, C28000, C44300, B, C & D, C44400, C44500, C68000, C81300, C81400, D, C68700, B, C73400, C73600-65-10)
03	Seamless / Welded Pipe Fittings	Elbow, Bends, Tee, Reducers / Cap, Lateral	1/8" TO 48"	Stainless Steel (A182/A182M Grade TP 304, 304L, 304H, 316, 316L, 316H, 316Ti, 317, 317L, 321, 321H, 347, 347H, 8904-904L)
			1/2" TO 48"	Duplex Steel (A234 WP1 / WP2 / WPS / WPS / WP11 / WP12 / WP22 / WP31, S1903S32750, S32205, 410)
			1/2" TO 36"	Nickel Alloy (INCONEL 600, 601, 625, 718, 800, 800H, 800HT, 825, 925, MONEL 400, MONEL 500, HASTELLOY C276, B2, B3, SMO 31254)
			1/2" TO 50"	Alloy Steel (P1 / P2 / P3 / P4 / P11 / P12 / P22 / P91)
1/2" TO 50"	Carbon Steel (A105 / A105M / A2341 / A234M / A350 / A350M)			

H.O.(INDIA) : Gulf Lloyds Industrial Services (India) Pvt. Ltd.
910, C-6, Express, Dhuley Road, Ahmedabad - 380002, Gujarat, India.
+91-79-88013320, contact@gilba.com, india@gilba.com
H.O.(USA) : Gulf Lloyds (Middle-East) LLC, Abu Dhabi, U.A.E.
+971-2-4771281, usa@gilba.com
www.gilba.com

(ISO No. GLIS/SC006)
خليج لويذ انشورز (مصر)
Page 1 of 1

СВИДЕТЕЛЬСТВО | CERTIFICATE | CERTIFICAT | ZERTIFIKAT
شهادة

GLOBAL MANAGEMENT SYSTEM CERTIFICATE

Declaration of Compliance

Name & Address of Manufacturer:

SAKAR METAL & TOOLS PVT. LTD.
B-232/233, 2nd Floor, Advance Business Park, Shahibaug,
Ahmedabad-380004, Gujarat, India.

This is to certify that the manufacturer has implemented and applies QA System.

Applied Pressure Equipment Directive 2014/68/EU
System Acc: To EN 784-5, article 4.2 and AD- 2000 Merkblatt W.

For Following Scope:

Manufacturer, Supplier & Exporter of Stainless Steel, Carbon Steel, Alloy Steel & Nickel Alloy Pipes, Tubes, Pipe Fittings and Flanges.

Production Site:

B-232/233, 2nd Floor, Advance Business Park, Shahibaug,
Ahmedabad-380004, Gujarat, India.

Certificate No. : 1011-PED-BA-02-3202-SIAC-001713-IN

This certificate is valid from 20-Feb-2023 until 20-Feb-2026 and remain valid subject to satisfactory Annual surveillance audits. Certification expiry on 19-Feb-2026.

The validity of this certificate is connected to a valid certification accordance with ISO 9001 : 2015.

The manufacturer shall be responsible for the manufacturer's compliance with the applicable directives. GIBA has performed a review of the technical data on the part of the product. The manufacturer is responsible for the validity of the data and for the compliance with the applicable directives. The manufacturer is responsible for the validity of the data and for the compliance with the applicable directives. The manufacturer is responsible for the validity of the data and for the compliance with the applicable directives.

Date of Issue : 20/02/2023
Place: Varese, Italy.

[Signature]
GIBA - Certification
(Pressure Equipment)
Gulf Lloyds Business Assurance (Europe)

GIBA has been accredited by SIACET (Swiss International Accreditation Center - Europe). For verification of this certificate visit WWW.GL-BA.COM / WWW.SIACET.COM. The certificate remains the property of GIBA, to whom it must be returned on request. Lack of fulfillment of certification terms and conditions of all issues may render this certificate invalid. The annual factory visits with the manufacturer in accordance with the accreditation conditions and contractual obligations, including applicable standards. The directive allows also in the reference only and does not include accreditation. Gulf Lloyds Assurance, Insurance does not accept any liability due to this certificate.



SAKAR METAL & TOOLS PVT. LTD.

We take this opportunity with pleasure and are pleased to introduce **SAKAR METAL & TOOLS PVT LTD.**, AN ISO 9001 : 2015, ISO : 45001 : 2018, PED certified company. Our core business is consolidated on a dedication and technological line of products for the safe effective transfer and storage of flammable chemicals and hydrocarbon, covering engineered products such as **Stainless steel, Carbon steel, Mild steel, Alloy steel (IBR & NON-IBR) pipes, Fittings, All types of Flanges & all types of steels like Angle, Channel, Plate, Coil, I-beam, Round bar, TMT, and all types of IBR & NON-IBR industrial valves and Welding safety items.** We supply these products worldwide, as we have been developing our activities on a global scale.

You will be pleased to know that we are in this field for the last 20 years as one of the leading suppliers, and have a tremendous experience in the field of supplying these materials to the government, semi-government, public, and multinational undertaking companies throughout the country. Which includes enterprises like the projects of oil, gas, power, petrochemicals, fertilizer, chemicals, distribution terminals, cement, paper, textile, and EPC projects as per specification and standards.

Our leading advantage is our qualified workforce, we have a pool of specialists in the field of technical, deals & logistics. To meet continuous demand, we always keep a large stock of finished products. We are fully committed to providing the best solution for your business.

We wish to have business with your esteemed organization to render our service by empowering you with quality at the best price and timely delivery.

Thank You,

Sakar Metal & Tools Pvt. Ltd.

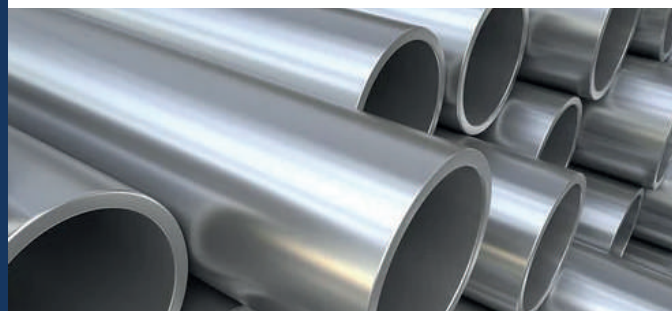
Anil Soni, Director

Mo.: +91 92 27 27 27 55

STAINLESS STEEL PIPES

(Grade: 304-304L, 316-316L, 310-310H, ERW/SEAMLESS)

Nominal	Nominal Pipe Size	Outside Diameter	Wall Thickness and Weight							
			Sch. 5 S		Sch. 10 S		Sch. 40 S		Sch. 80 S	
Inches	mm	mm	Thick.mm	Kg/m	Thick.mm	Kg/m	Thick.mm	Kg/m	Thick.mm	Kg/m
1/8	6	10.29	-	-	1.24	0.281	1.73	0.370	2.41	0.475
1/4	8	13.72	-	-	1.65	0.498	2.24	0.643	3.02	0.808
3/8	10	17.15	-	-	1.65	0.639	2.31	0.857	3.20	1.116
1/2	15	21.34	1.65	0.812	2.11	1.014	2.77	1.286	3.73	1.642
3/4	20	26.67	1.65	1.032	2.11	1.296	2.87	1.708	3.91	2.225
1	25	33.40	1.65	1.310	2.77	2.121	3.38	2.537	4.55	3.282
1.1/4	32	42.16	1.65	1.671	2.77	2.728	3.56	3.435	4.85	4.524
1.1/2	40	48.26	1.65	1.923	2.77	3.150	3.68	4.101	5.08	5.484
2	50	60.33	1.65	2.421	2.77	3.986	3.91	5.515	5.54	7.588
2.1/2	65	73.03	2.11	3.741	3.05	5.336	5.16	8.755	7.01	11.570
3	80	88.90	2.11	4.578	3.05	6.546	5.49	11.448	7.62	15.484
3.1/2	90	101.60	2.11	5.248	3.05	7.514	5.74	13.756	8.08	18.891
4	100	114.30	2.11	5.918	3.05	8.483	6.02	16.296	8.56	22.628
5	125	141.30	2.77	9.593	3.40	11.722	6.55	22.065	9.52	31.364
6	150	168.28	2.77	11.462	3.40	14.015	7.11	28.648	10.97	43.142
8	200	219.08	2.77	14.979	3.76	20.240	8.18	43.129	12.70	65.526
10	250	273.05	3.40	22.920	4.19	28.163	9.27	61.131	12.70	82.661
12	300	323.85	3.96	31.669	4.57	36.478	9.52	74.811	12.70	98.790
14	350	355.60	3.96	34.812	4.78	41.923	9.53	82.451	12.70	108.871
16	400	406.40	4.19	42.131	4.78	47.994	9.53	94.554	12.70	125.000
18	450	457.20	4.19	47.453	4.78	54.064	9.53	106.657	12.70	141.129
20	500	508.00	4.78	60.135	5.54	69.591	9.53	118.760	12.70	157.258
22	550	558.80	4.78	66.205	5.54	76.627	9.53	130.864	12.70	173.387
24	600	609.60	5.54	83.662	6.35	95.766	9.53	142.697	12.70	189.516



CARBON STEEL & ALLOY STEEL GR A 106 SEAMLESS PIPES

Nominal Pipe Size	OD mm	5 S	10 S	10	20	30	STD and 40 S	40	60	XS and 40 S	80	100	120	140	160	XXS
1/8"	10.3		1.24				1.73			2.41						
			0.28				0.37			0.47						
1/4"	13.7		1.65				2.24			3.02						
			0.49				0.63			0.80						
3/8"	17.1		1.65				2.31			3.2						
			0.63				0.84			1.10						
1/2"	21.3	1.65	2.11				2.77			3.73					4.78	4.78
		0.80	1.00				1.27			1.62					1.95	2.55
3/4"	26.7	1.65	2.11				2.87			3.91					5.56	7.82
		1.03	1.28				1.69			2.20					2.90	3.64
1"	33.4	1.65	2.77				3.38			4.55					6.35	9.09
		1.30	2.09				2.50			3.24					4.24	5.54
1 1/4"	42.2	1.65	2.77				3.56			4.85					6.35	9.70
		1.65	2.70				3.39			4.77					5.61	7.77
1 1/2"	48.3	1.65	2.77				3.68			5.08					7.14	10.15
		1.91	3.11				4.05			5.41					7.25	9.56
2"	60.3	1.65	2.77				3.91			5.54					8.74	11.07
		2.40	3.93				5.44			7.48					11.11	13.45
2 1/2"	73.0	2.11	3.05				5.16			7.01					9.53	14.02
		3.69	5.26				8.63			11.41					14.92	20.39
3"	88.9	2.11	3.05				5.49			7.62					11.13	15.24
		4.51	6.45				11.29			15.27					21.35	27.68
3 1/2"	101.6	2.11	3.05				5.74			8.08						
		5.18	7.40				13.57			18.63						
4"	114.3	2.11	3.05				6.02			8.56			11.13		13.49	17.12
		5.84	8.36				16.07			22.32			28.32		33.54	41.03
5"	141.3	2.77	3.40				6.55			9.53			12.70		15.88	19.05
		9.47	11.57				21.77			30.97			40.28		49.11	57.43
6"	168.3	2.77	3.40				7.11			10.97			14.27		18.26	21.95
		11.32	13.84				28.26			42.56			54.20		67.56	79.22
8"	219.1	2.77	3.76		6.35	7.04	8.18	10.31	12.70	15.09	18.26	20.62	23.01	25.23	27.68	30.15
		14.79	19.96		33.31	36.81	42.55	53.08	64.64	75.92	90.44	100.92	111.27	121.62	131.97	142.32
10"	273.0	3.40	4.19		6.35	7.80	9.27	12.70	12.70	15.09	18.26	21.44	25.40	28.58	31.76	34.94
		22.63	27.78		41.11	51.03	60.31	81.55	81.55	96.01	114.75	133.06	155.15	172.33	189.51	206.69
12"	323.9	3.96	4.57		6.35	8.38	9.53	10.31	14.27	12.70	17.49	21.44	25.40	28.58	33.32	35.40
		31.25	36.00		49.73	65.20	73.88	79.73	108.96	97.46	132.08	159.91	186.97	208.14	238.76	269.38
14"	355.6	3.96	4.78	6.35	7.92	9.53	9.53	11.13	15.09	12.70	19.05	23.83	27.79	31.75	35.71	39.67
		34.36	41.30	54.69	67.90	81.33	81.33	94.55	126.71	107.39	158.10	194.96	224.65	253.56	281.70	310.21
16"	406.4	4.19	4.78	6.35	7.92	9.53	9.53	12.70	16.66	12.70	21.44	26.19	30.96	36.53	40.49	44.45
		41.56	47.29	62.64	77.83	93.27	93.27	123.30	160.12	123.30	203.53	245.56	286.64	333.19	365.35	397.51
18"	457	4.19	4.78	6.35	7.92	11.13	9.53	14.27	19.05	12.70	23.83	29.36	34.93	39.67	45.24	50.81
		46.81	53.26	70.57	87.71	122.38	105.16	155.80	205.74	139.15	254.55	309.62	363.56	408.26	459.37	510.48
20"	508	4.78	5.54	6.35	9.53	12.70	9.53	15.09	20.62	12.70	26.29	32.54	38.10	44.45	50.01	55.57
		59.25	68.61	78.55	117.15	155.12	117.15	183.42	247.83	155.12	311.17	381.53	441.49	508.11	564.81	621.51
22"	559	4.78	5.54	6.35	9.53	12.70	9.53		22.23	12.70	28.58	34.93	41.28	47.63	53.98	60.33
		65.24	75.53	86.54	129.13	171.09	129.13		294.25	171.09	373.83	451.42	527.02	600.63	672.26	743.89
24"	610	5.54	6.35	6.35	9.53	14.27	9.53	17.48	24.61	12.70	30.96	38.89	46.02	52.37	59.54	66.71
		82.47	94.53	94.53	141.12	209.64	141.12	255.41	355.26	187.06	442.08	547.71	640.03	720.15	808.22	896.29
26"	660			7.92	12.70		9.53			12.70						
				127.36	202.72		152.87			202.72						
28"	711			7.92	12.70	15.88	9.53			12.70						
				137.32	218.69	271.21	164.85			218.69						
30"	762	6.35	7.92	7.92	12.70	15.88	9.53			12.70						
		118.31	147.28	147.28	234.67	292.18	176.84			234.67						
32"	813			7.92	12.70	15.88	9.53	17.48		12.70						
				157.24	250.64	312.15	188.82	342.91		250.64						
34"	864			7.92	12.70	15.88	9.53	17.48		12.70						
				167.20	266.61	332.12	200.31	364.90		266.61						
36"	914			7.92	12.70	15.88	9.53	19.05		12.70						
				176.96	282.27	351.70	212.56	420.42		282.27						

Bold Faced : Wall thickness in mm | Italic Faced : Weight in Kg/mtr



N. B. And Series	Outside Diameter		Wall Thickness		Nominal Width Black Tubes		Nominal Meters Black Tubes		Nominal Width Galvanized Tubes		Nominal Meter Galvanized Tubes	
					P.E.	S & S	P.E.	S & S	P.E.	S & S	P.E.	S & S
mm	Min. mm	Max. mm	mm	SWG	Kg / m	Kg / m	m / ton	m / ton	Kg / m	Kg / m	m / ton	m / ton
15L	21.00	21.40	2.00	14	0.947	0.956	1056	1046	0.947	0.956	1056	1046
M	21.00	21.80	2.60	12	1.21	1.22	826	819	1.21	1.22	826	819
H	21.00	21.80	3.20	10	1.44	1.45	694	689	1.44	1.45	694	689
20L	26.40	26.90	2.30	13	1.38	1.39	724	719	1.38	1.39	724	719
M	26.50	27.30	2.60	12	1.56	1.57	641	637	1.56	1.57	641	637
H	26.50	27.30	3.20	10	1.87	1.88	534	532	1.87	1.88	534	532
25L	33.20	33.80	2.60	12	1.98	2.00	505	500	1.98	2.00	505	500
M	33.30	34.20	3.20	10	2.41	2.43	415	411	2.41	2.43	415	411
H	33.30	34.20	4.00	8	2.93	2.95	341	339	2.93	2.95	341	339
32L	41.90	42.50	2.60	12	2.54	2.57	393	389	2.54	2.57	393	389
M	42.00	42.90	3.20	10	3.10	3.13	322	319	3.10	3.13	322	319
H	42.00	42.90	4.00	8	3.79	3.82	264	261	3.79	3.82	264	261
40L	47.80	48.40	2.90	11	3.23	3.27	309	306	3.23	3.27	309	306
M	47.90	48.80	3.20	10	3.56	3.60	281	277	3.56	3.60	281	277
H	47.90	48.80	4.00	8	4.37	4.41	229	226	4.37	4.41	229	226
50L	59.60	60.20	2.90	11	4.08	4.15	245	241	4.08	4.15	245	241
M	59.70	60.80	3.60	9	5.03	5.10	199	196	5.03	5.10	199	196
H	59.70	60.80	4.50	7	6.19	6.26	161	159	6.19	6.26	161	159
65L	75.20	76.00	3.20	10	5.71	5.83	175	171	5.71	5.83	175	171
M	75.30	76.60	3.60	9	6.42	6.54	155	153	6.42	6.54	155	153
H	75.30	76.60	4.50	7	7.93	8.05	126	124	7.93	8.05	126	124
80L	87.90	88.70	3.20	10	6.72	6.89	149	145	6.72	6.89	149	145
M	88.00	89.50	4.00	8	8.36	8.53	119	117	8.36	8.53	119	117
H	88.00	89.50	4.80	6	9.90	10.40	101	96	9.90	10.40	101	96
100L	113.00	113.90	3.60	9	9.75	10.00	102	100	9.75	10.00	102	100
M	113.10	115.00	4.50	7	12.20	12.50	82	80	12.20	12.50	82	80
H	113.10	115.00	5.40	5	14.50	14.80	69	67	14.50	14.80	69	67
125M	138.50	140.80	4.80	6	15.90	16.40	63	61	15.90	16.40	63	61
H	138.50	140.80	5.40	5	17.90	18.40	56	54	17.90	18.40	56	54
150M	163.90	166.50	4.80	6	18.90	19.50	53	51	18.90	19.50	53	51
H	163.90	166.50	5.40	5	21.30	21.90	47	45	21.30	21.90	47	45





Section RHS (mm)	Depth D(mm)	Width B(mm)	Thickness T(mm)	Weight Kg/m	m/tonne
25.0×25.0	25.00	25.00	2.60	1.69	592
	25.00	25.00	3.20	1.98	505
32.0×32.0	32.00	32.00	2.60	2.26	442
	32.00	32.00	3.20	2.69	372
	32.00	32.00	4.00	3.19	313
40.0×40.0	40.00	40.00	2.60	2.75	364
	40.00	40.00	2.90	3.03	330
	40.00	40.00	3.20	3.29	304
	40.00	40.00	3.60	3.63	275
	40.00	40.00	4.00	3.95	253
49.5×49.5	49.50	49.50	2.90	4.07	246
	49.50	49.50	3.60	4.93	203
	49.50	49.50	4.00	5.39	186
60.0×60.0	60.00	60.00	3.20	5.50	182
	60.00	60.00	3.60	6.11	164
	60.00	60.00	4.00	6.71	149
72.0×72.0	72.00	72.00	3.20	6.71	149
	72.00	72.00	4.00	8.22	122
90.0×90.0	90.00	90.00	3.60	9.50	105
	90.00	90.00	4.50	11.67	86
	90.00	90.00	5.40	13.75	73
113.0×113.0	113.00	113.00	4.50	14.92	67
	113.00	113.00	4.80	15.92	63
	113.00	113.00	5.40	17.66	56
	113.00	113.00	6.00	19.53	25
132.0×132.0	132.00	132.00	4.80	18.71	53
	132.00	132.00	5.40	20.88	48
	132.00	132.00	6.00	23.01	43

Section RHS (mm)	Depth D(mm)	Width B(mm)	Thickness T(mm)	Weight Kg/m	m/tonne
50.0×25.0	50.00	25.00	2.90	2.98	336
	50.00	25.00	3.20	3.24	309
60.0×40.0	60.00	40.00	2.90	4.12	243
66.0×33.0	66.00	33.00	2.90	4.07	246
	66.00	33.00	3.60	4.93	203
	66.00	33.00	4.00	5.95	168
80.×60.0	80.00	60.00	2.60	5.37	186
	80.00	60.00	3.20	6.50	154
	80.00	60.00	4.00	7.97	126
80.×40.0	80.00	40.00	2.90	5.03	199
	80.00	40.00	3.20	5.50	182
	80.00	40.00	4.00	6.71	149
96.0×48.0	96.00	48.00	3.20	6.71	149
	96.00	48.00	4.00	8.22	122
120.0×60.0	120.00	60.00	3.60	9.51	103
	120.00	60.00	4.50	11.67	84
	120.00	60.00	5.40	14.01	71
145.0×82.0	145.00	82.00	3.60	12.16	82
	145.00	82.00	5.40	17.74	56
172.0×92.0	172.00	92.00	3.60	14.25	70
	172.00	92.00	5.40	20.88	48

ANGLE

Size mm	Weight Kg / m
20x20x3	0.900
25x25x3	1.1
25x25x5	1.8
30x30x3	1.4
30x30x5	2.2
35x35x5	1.6
35x35x5	2.6
35x35x5	3.0
40x40x5	3.0
40x40x6	3.5
45x45x5	3.4
45x45x6	4.0
45x45x6	3.8
50x50x5	4.5
50x50x6	5.8
65x65x6	7.7
65x65x10	9.4
75x75x6	6.8

EQUAL ANGLE

Size mm	Weight Kg / m
75x75x8	8.9
75x75x10	11.0
80x80x6	7.3
80x80x8	9.6
80x80x12	14.6
90x90x6	8.2
90x90x8	10.8
90x90x10	13.4
90x90x12	15.8
100x100x5	9.2
100x100x6	12.1
100x100x10	14.9
100x100x12	14.7
110x110x8	13.4
110x110x10	16.5
110x110x12	19.6
110x110x15	24.2
130x130x8	15.9
130x130x10	19.7
130x130x12	23.4
130x130x15	28.9
150x150x10	22.8
150x150x12	27.2

EQUAL ANGLE

Size mm	Weight Kg / m
150x150x16	35.8
150x150x18	39.9
150x150x20	44.1
200x200x16	48.5
200x200x20	60.0

UN EQUAL ANGLE	
45x30x5	2.8
45x30x6	3.3
65x45x6	6.4
75x50x6	5.6
75x50x6	7.4
75x50x10	9.0
90x60x6	6.8
90x60x10	11.0
100x75x8	10.5
100x75x10	13.5
125x75x8	12.1
125x75x10	14.9
150x115x10	20.2
150x115x12	23.8
150x115x16	31.3

EQUAL CHANNEL

Size mm	Weight Kg / m
75x40	6.8
100x50	9.2
125x65	12.8
150x75	16.4
175x75	17.6
200x75	21.5
225x80	26.0
250x80	30.4
300x90	33.1

HEAVY WEIGHT ISMC

Size mm	Weight Kg / m
125x66	13.7
150x76	17.7
175x77	21.7
200x75	24.3
225x83	30.7
250x82	34.2
300x92	41.5

I-BEAM

Size mm	Weight Kg / m
100x50	8.00
125x70	13.2
150x75	15.00
150x150	37.1
175x85	19.2
200x100	25.4
200x200	49.4
200x140	28.8
250x125	37.2
300x140	45.1
350x140	62.6
450x150	73.1
500x180	87.7
600x210	99.5



BUTTWELD FITTINGS

The Buttwelded Fittings Products are -

- 45°, 90°, & 180° Elbows & Bends
- Long Neck Stubend & Short Neck Stubend
- Equal Tee & Unequal Tee

- Concentric Reducer & Eccentric Reducer
- Pipe End Cap

Size : ¼" to 24".

Type : Welded & Seamless.

Thickness : SCH5s, SCH10s, SCH20s, SCH40, SCH80, SCH160, SCHXXS.

Dimension : ANSI, ASME, DIN, JIS, MSS, ETC.



FLANGES

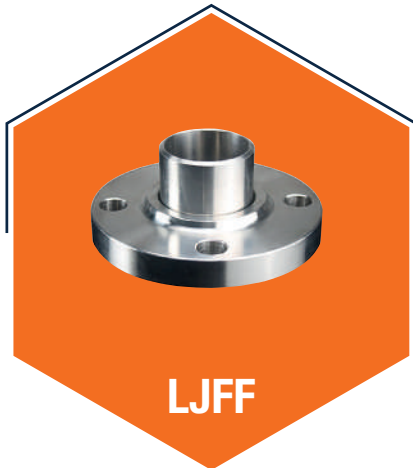
- Slip On Flange
- Blind Flange
- Weld Neck Flange
- Socket Weld Flange
- Threaded Flange
- Lap Joint Flange
- Screwed Flange
- Spectacle Blind Flange
- Oriface Flange

Dimension : ANSI, ASME, DIN, JIS, BD, AFNOR, AS, MSS, BS10.

Class : 125#, 150#, 300#, 600#, 900#, 1500#, 2000#, Table D, E, F, H, PN 6, 10, 16, 25, 40, 100, etc.

Flange Facing : Raised Faced, Flat Faced, Small & Large Male-Female, Small & Large Tongue & Groove, Ring Joint, etc.

Grade : Stainless Steel, Carbon Steel, Alloy Steel, Nickel Steel, Etc.



FORGED FITTINGS

- 45° Elbow & 90° Elbow
- Equal Tee & Unequal Tee
- Full Coupling & Half Coupling
- Plug
- Nipple
- Union

Size : ¼" to 4"

Dimension : ANSI, ASME, DIN, JIS, MSS, ETC.

Class : 3000#, 6000#, 9000#, Any Other Special Thickness.

Grade : Stainless Steel, Carbon Steel, Alloy Steel, Nickel Steel, Etc.



INDUSTRIAL VALVES

Grade : SS 304/316, CS WCB, CI

Type : Flange end, Screw end

VALVES



Ball Valve

- > 1 PC Design Ball Valve
- > 2 PC Design Ball Valve
- > 3 PC Design Ball Valve



Check Valve

- > Disc Check Valve
- > Wafer Type NRV
- > NRV Check Valve



Swing Check Valve

- > Disc Check Valves
- > Non Return Valves



Gate Valve

- > Gate Valve 150 Class
- > Gate Valve 300 Class



Globe Valve

- > Globe Valve 150 Class
- > Globe Valve 300 Class



Strainer

- > "Y" Type Strainer
- > "T" Type Strainer



Butterfly Valve

- > Gear Operated
- > Lever Operated
- > Actuator Type



Knife Gate Valve

- > Hand Wheel Operated
- > Gear Operated



Other

- > Needle Valve
- > Water Flowmeter
- > Steam Trap

TOOLS



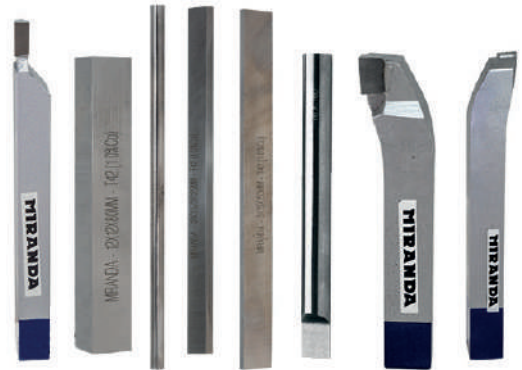
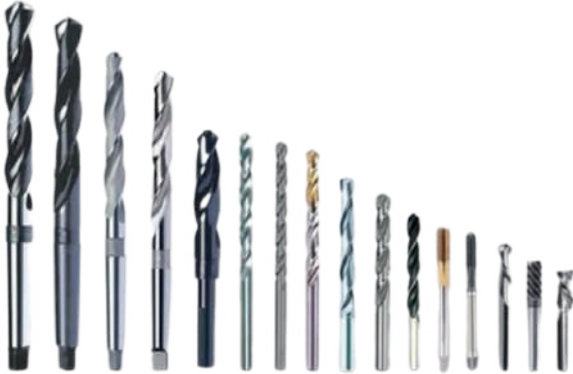
BOSCH



Prayosha®



TOOLS



PRODUCTS

PRODUCTS



Baumer
Passion for Sensors



Unbrako
THE WORLD LEADER



APEX
SINCE 1959

CARBORUNDUM
Schleifmittelfabrik GmbH



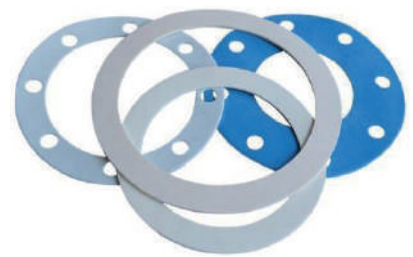
RealOn
A Premium Braided & Suction Pipe



JSIW
INFRASTRUCTURE PVT.LTD



TOOLS

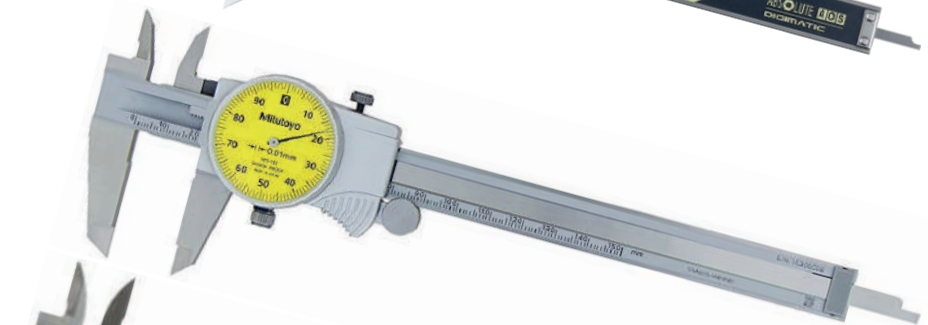


MEASUREMENT INSTRUMENT

TOOLS

Mitutoyo

New



PRODUCTS



Bench Vice



Spray Gun



Hose Clamp



Hacksaw Blade



Revolving Center



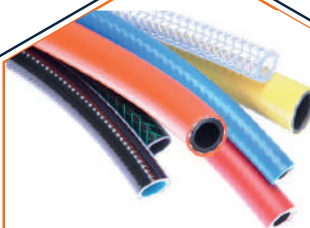
Measure Tape



Grease Gun



Love Joy Coupling



Rubber Hose



Regulator



Diamond Chain



01. Pharmaceuticals
 02. Petro Chemical Plant
 03. Sugar Mills
 04. Iron & Steel Plant
 05. Ceramic Plant
 06. Dairy Industries
 07. Civil Construction
 08. Automobile Industries
 09. Heavy Machineries
 10. Textile Industries
 11. Power Sectors
 12. Refineries
 13. Food Industries
 14. Paper & Pulp Industries
 15. Acid & Chemical
- Industries & Many More...



B-232 / 233, 2nd Floor, Advance Business Park,
Opp. Swaminarayan Temple, Shahibaug,
Ahmedabad-380 004.



+91 92 27 27 27 55, 92 27 27 27 44, 92 27 27 27 33



sakarmetal@yahoo.com